



SPONSORED BY  
 **Free Condo Buying Classes**  
 Click Here for All Classes

**HOME** | **NEW DEVELOPMENTS** | **SEARCH ALL PROPERTIES** | **OPEN HOUSES** | **NEIGHBORHOODS** | **POST A LISTING** | **contact us** | **help**

Search new homes | New Developments directory | Select an area   | City Living | Floor Plan of the Week | Builder directory

Advertising content

## City Living

July 10, 2007

### Luxe (Queen Anne)

The affordable elegance of a boutique community comes to Queen Anne

Luxe Condominiums, Queen Anne's newest boutique community, opened for sales just two weeks ago and has already sold nearly a third of its homes.

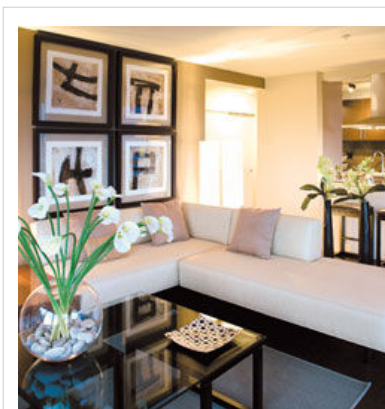
According to Chaun Mackey, president of Miller Condominium Marketing, "This success is due in part to a lack of comparable communities of this high caliber in Queen Anne, and the finishes and appointments found only at Luxe." With a mix of one- and two-bedroom homes, including two penthouses, Luxe is a desirable community for both young professionals and empty nesters looking for a discerning address away from downtown – yet with all the urban amenities that the neighborhood has to offer.

It's the kind of community that comes along very rarely, says Mackey – a small boutique setting at the end of a quiet cul-de-sac in the heart of a sought-after residential area of Seattle, with prices ranging from the upper \$300,000s for a one-bedroom home to \$1.5 million for a three-level penthouse with sweeping views.

Many of the homes at Luxe offer views of the downtown skyline, the ferries crossing Puget Sound, Mt. Rainier and the Olympic Mountains. From Luxe's front doorstep, residents enjoy proximity to the Seattle Opera, Pacific Northwest Ballet, KeyArena and countless retailers, restaurants and nightclubs.

Mackey says several local online real-estate blogs have already reviewed the community positively, with one stating: "At first impression one wouldn't think of Luxe as a conversion. Considering the level of updates, re-fittings and interior quality finishes, Luxe is comparable to new construction."

All Luxe homes have either a balcony or a patio (some have entertainment-sized decks) and feature expansive severe-weather-rated windows with a variety of views from every home, steel-frame building construction, controlled access with video monitoring and controlled-access



[Q Enlarge](#)

[» More images](#)

#### View these homes

The decorated model and sales center are open daily, from noon to 6 p.m., at 500 Fifth Ave. W. in Seattle's Lower Queen Anne.

#### Getting there

From I-5, take the Mercer Street/Fairview Avenue North exit. Follow Broad Street to Denny Way. Turn right onto Denny at Pacific Science Center. Follow Denny to First Avenue North and turn right. Follow to West Mercer Street and turn left. Continue on West Mercer past KFC and turn left onto Fifth Avenue West. Luxe is at the end of the cul-de-sac on the left.

#### Prices

From the upper \$300,000s to \$1.5 million

#### Information

206-322-2000 or [www.luxe-condos.com](http://www.luxe-condos.com)

#### Explore

Find out more about [Queen Anne](#)

ADVERTISING

**Bold  
Sophisticated  
Inspiring**

Townhomes for Modern Living



Come experience  
an extraordinary  
balance between  
drama and function

**NOMO**  **12**  
MODERN LIVING

underground garage parking, high-speed cable and Internet wiring, high-efficiency, radiant, wall-mounted heating systems and air conditioning in all homes.

Residences from the lobby level up to the seventh floor are situated around a stylish entry and vaulted lobby atrium. In a variety of floor plans, you'll find chocolate-colored cork or natural walnut hardwood flooring upon entering the homes. Tall ceilings combined with expanses of oversized windows enhance a sense of airiness as you continue from the entry into the kitchen. Open to both the dining area and the light-filled living room for interactive entertaining, it is fitted with a stainless Jenn-Air smooth-top range, an oven, a suspended hood and dishwasher and a Fisher & Paykel bottom-mount refrigerator. Exotic African Tay/Koto wood cabinets in deep espresso tones and muted grays are contrasted by custom stone kitchen countertops with inlaid mother-of-pearl. A deep, stainless undermount sink with pull-out faucet and full-height contemporary Italian tile backsplash finish off the kitchen's clean lines.

Bedrooms feature large closets with built-in storage systems. Main bathrooms and masters are appointed with custom inlaid imported tile, rich marble floors, custom wood cabinetry and limestone-topped vanities. Homes can also be upgraded to include an optional Whirlpool front-load, stackable washer and dryer.

*This content has been prepared by the advertising department of The Seattle Times Company. For more information about City Living contact [webmaster@nwhomes.com](mailto:webmaster@nwhomes.com).*

ADVERTISING



ADVERTISING

[Buy a NW ad](#)

**Mortgage Rates at 4.65%**

\$170,000 loan for \$656/month. See New Payment - No SSN Rqd. Save Now!  
[Refinance.LeadSteps.com](http://Refinance.LeadSteps.com)

**House Payments Fall Again**

\$180,000 Mortgage for \$999/Mo. Calculate Payment- Refi Now!  
[www.LowerMyBills.com](http://www.LowerMyBills.com)

**Mortgage Rates at 4.875%**

Get \$225,000 loan for \$914/month. Lower Your Monthly Payment. Act Now!  
[Refinance.LoanOffer.com](http://Refinance.LoanOffer.com)

[NWjobs](#) | [NWautos](#) | [NWhomes](#) | [NWapartments](#) | [NWsource](#) | [seattletimes.com](#) | [seattlepi.com](#)

[webmaster@nwhomes.com](mailto:webmaster@nwhomes.com)

[Advertise with us](#) | [Privacy statement](#) | [Terms of service](#) | [Preventing fraud](#)

Copyright © 2007 The Seattle Times Company